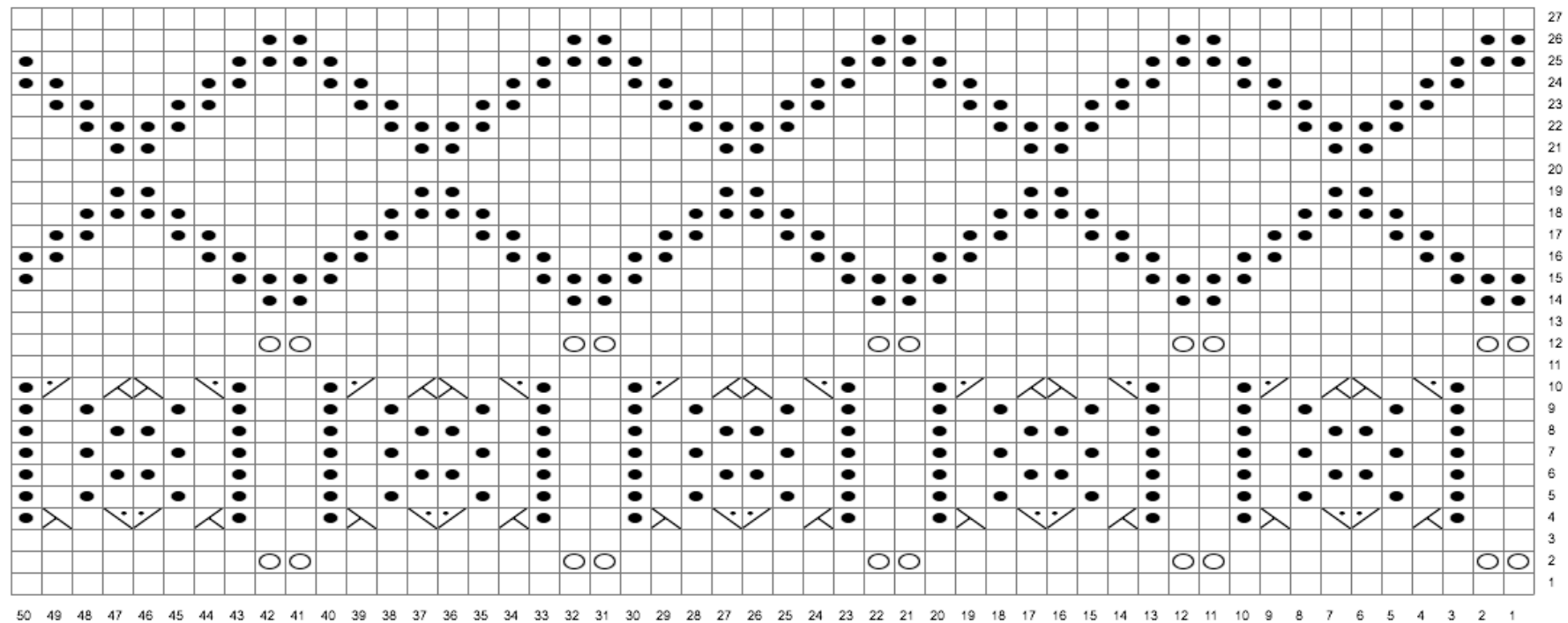


ADDENDUM

There were some errors in the Chart for Project 11: Sapphire page 74. This page contains the corrected chart.

Sapphire



Knitting instructions

Work from right to left on RS rows and left to right on WS rows

Row 1 is a WS row

Symbols

- Knit on RS rows, purl on WS rows
- Bobble ((k1, p1, k1) into next st, turn work, (k1, p1) into next 2 sts, turn, leaving 3rd st on LH ndl, once turned, sl leftover st from RH ndl to LH ndl, and pass 4 sts over, sl st onto RH ndl.
- Purl on RS rows, knit on WS rows
- sl2 to CN, hold in front. p1, k2 from CN
- sl1 to CN, hold in back. k2, p1 from CN